

HARBOR COVE

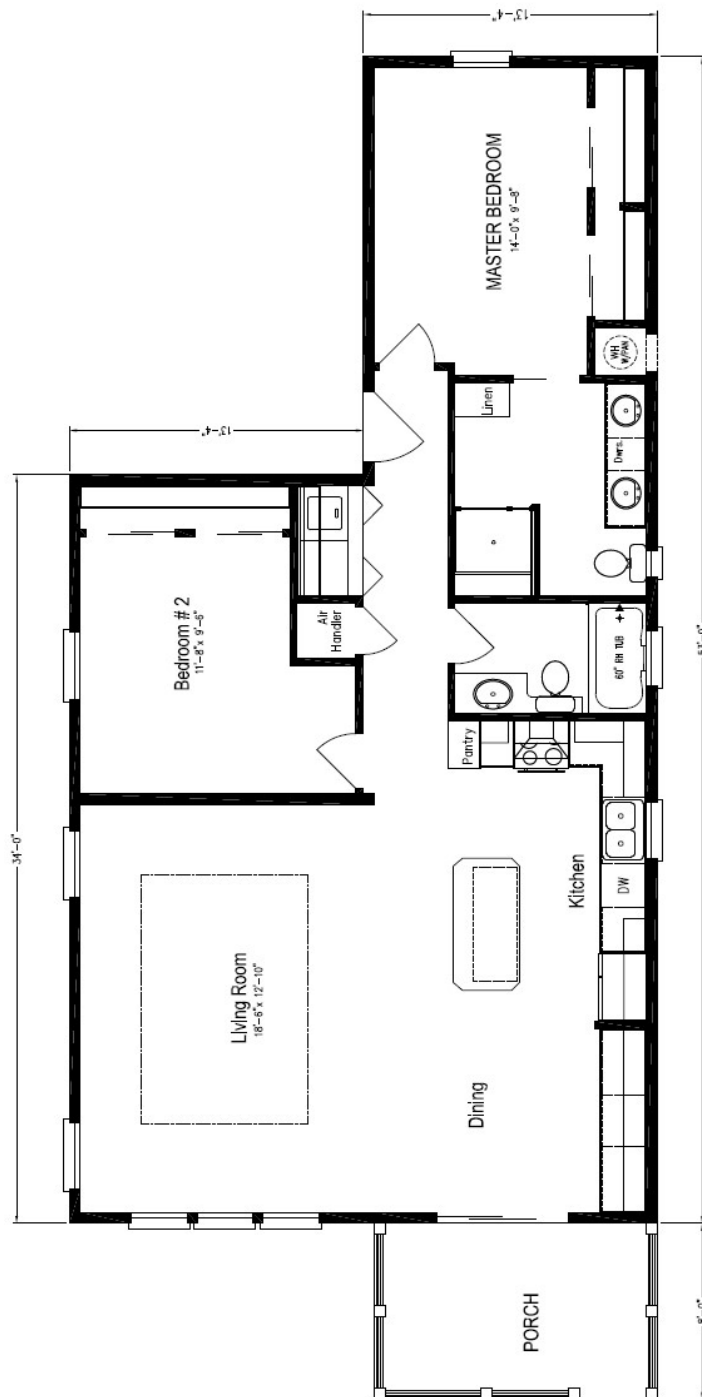
A 55+ Community

529 Ideal Place
NORTH PORT, FL

2BR/2BA WITH 8' X 13' PORCH

Interior/Exterior Features:

- 2" x 6" exterior wall studs
- 16" on center construction – trusses, exterior/interior studs, floor joists
- Upgraded insulation package – R30/19/11
- Dimensional shingles (Owens Corning)
- Exterior package including carport/shed – composite insulation roof
- Composite wood decking on porch and steps/landings
- Impact glass – windows and sliding glass doors
- Courtyard full glass entry door
- 9' flat ceilings
- Tray ceiling in living room
- 5" crown molding
- Solar tube – hall bathroom and hallway
- ½" drywall with knockdown finish and Sherwin Williams paint
- 40 gallon water heater
- LED can lights in kitchen/dining room/bathrooms
- Mohawk vinyl laminate floors throughout
- White shaker wood cabinets throughout
- 42" kitchen cabinets
- Stainless steel appliance package
- Quartz Counters in kitchen
- Diplomat tile shower in master bathroom
- Comfort height commodes
- Moen faucets throughout



* All options listed are subject to change without notice.

* All dimensions are approximate.



LEECORP
HOMES

239.498.2220 Estero • 941-240-6161 North Port

www.LeeCrpHomes.com



Front View



Rear View