



## THE SAND DOLLAR

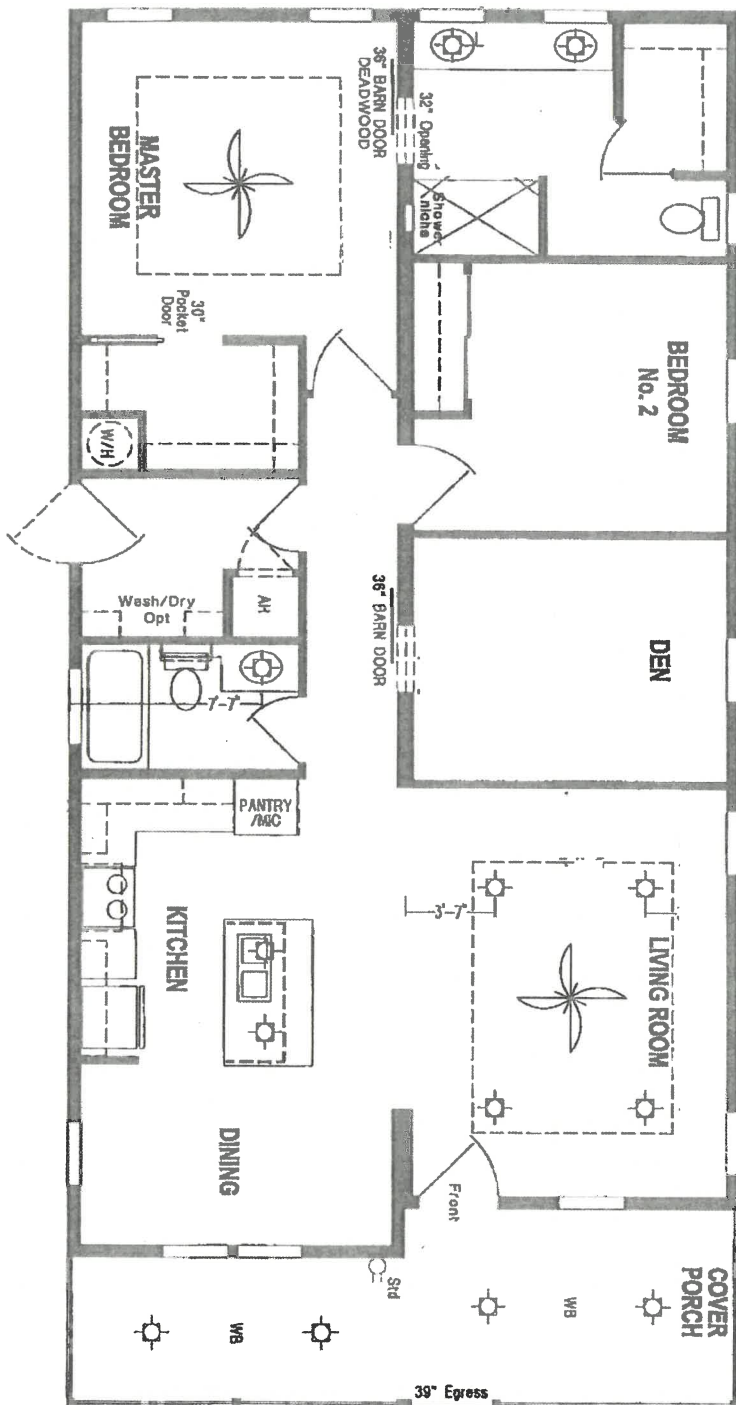
**2 BEDROOM + DEN / 2 BATH**

**1,275 sq. ft.**

**26'8" x 50'48"**

**With Factory-Built Porch**

**26'8" x 6'8"**



# SKYLINE®

PLEASE SEE SALES SPECIALIST FOR UPDATED PRICING

**LEECORP HOMES ESTERO MODEL CENTER**

20251 S. Tamiami Trail, Estero, FL 33928

239.498.2220 • 800.428.1318 • [www.LeeCorpHomes.com](http://www.LeeCorpHomes.com)

# SAND DOLLAR MODEL OPTIONS\*

## Interior/Exterior Upgraded Features:

- Composite wood decking on porch - \$1,330
- Recessed LED Lights - \$55 each
- Site Beam - \$457
- 40 gallon water heater - \$85
- ADA commodes (2) - \$290
- Transom windows (2) - \$480
- Shaw Vinyl laminate flooring throughout - \$5,763
- Extra interior receptacles (3) - \$145
- Kitchen pendant lights - \$70 each
- Utility room - 2 overhead cabinets with shelf - \$245
- Farmhouse sink - \$485
- Black hardware throughout - \$150
- Bathroom backsplash (2 rows) - \$285
- 18" Full backsplash in kitchen - \$539
- Backsplash to ceiling at range hood in kitchen - \$565
- Tiled Tub Surround in hall bath - \$685
- 30" Stonecrest range hood - \$440
- Whirlpool stainless steel appliance package (Refrigerator, range, dishwasher only) - \$1,947
- 36" barn door (Den and Master bath) - \$1,500
- Tray ceilings (Living room and Master bedroom) - \$1,440
- Additional interior door guest bedroom closet - \$280
- Pocket door on Master closet - \$265
- Cornice Board - (9 single windows) - \$480
- Cornice Board - (1 double window) - \$75
- Wire support for installed ceiling fans - \$392
- 52" Ceiling fans (2) - \$376
- Bathroom - 24" linen cab over commode - \$150
- LED Black frame mirror (2) - \$570
- Tile shower in Master bath - \$2,150
- Air handler closet - \$407
- Shake Siding at peak - front - \$250
- Vertical Board-n-Batten - front - \$375
- Black 3/4 glass front door - \$250

## COLOR SELECTIONS\*

PAINT SILVER FEATHER Throughout

CABINETS KITCHEN: Light Gray Island and White Cabinets

BOTH BATHROOMS: Standard White

MASTER SHOWER Carrara Tile

HALL SHOWER Grigio Tile

COUNTERTOPS KITCHEN: Aluma Marble, HALL BATH: Pietra Viva, MASTER BATH: Crystal Quartzite

HARDWARE Black Throughout

BACKSPLASH/LIP HALL BATH: True White

MASTER BATH: True White, KITCHEN: Daphne White

FLOORING Lifestyle Vinyl Plank - Ivory Oak - Throughout

EXTERIOR SIDING Tan, with white vertical board -n-batten on front with Pewter Vinyl Shake

ROOF SHINGLES Dove Gray Architectural Shingles

DECKING Alpine Gray

# Skyline Ocala- Silver Spring Series

## Standard Features

### CONSTRUCTION FEATURES

- ❖ Energy Star Certified
- ❖ 2" x 6" Exterior Walls - 16" O. C.
- ❖ 8' -6" Sidewall Height WITH Flat Ceiling
- ❖ OSB Exterior Wall Sheathing with House Wrap
- ❖ R-38 Ceiling Insulation with Baffle System
- ❖ R-19 Sidewall Insulation with Vapor Barrier
- ❖ R-22 Floor Insulation
- ❖ Architectural A/R Shingles with Full Underlayment & Painted Drip Edge
- ❖ 7/16" OSB Roof Decking
- ❖ 7" Minimum Side Overhangs with Vented Soffit
- ❖ 12" Gable Overhang with Vented Soffit
- ❖ Roof Ridge Vent
- ❖ Vinyl Lap Siding and Vinyl Window Lineals
- ❖ 72" & 48" Tall Vinyl Framed Insulated Low-E Windows w/Grids
- ❖ Insulated Sliding Glass Door with Grids & Vertical Blind – per plan
- ❖ 36" Monterey Shaker Style Fiberglass Front Door with Deadbolt and Storm- per plan
- ❖ 36" 9-Lite Fiberglass Rear Door with Deadbolt and Storm – per plan
- ❖ 19/32" OSB Tongue and Groove Floor Decking
- ❖ 2" x 6" Floor Joist - 16" O. C. (20, 22, 24, 28, & 42'-Wide Homes)
- ❖ 2" x 8" Floor Joist – 16" O.C. – 32'-wide

### PLUMBING/HVAC

- ❖ PEX Fresh Water Lines
- ❖ 30 Gallon Electric Water Heater with Pan
- ❖ Plumb for Washer
- ❖ Interior Main Whole House Water Shut-Off Valve
- ❖ Water Shut-Off Valves at all Sinks and Commodes
- ❖ Engineered Overhead Duct System & Programable Thermostat
- ❖ Whole House Ventilation System Multi-Direction Ceiling Grids
- ❖ Filter Grill with Filter Installed
- ❖ In the Ceiling Room-to-Room Air Exchange

### LIVING AREAS

- ❖ 8' 6" Flat Ceilings Through Out
- ❖ Orange Peel Textured Ceilings
- ❖ 1/2" Finished Drywall Throughout with Bullnose Corners
- ❖ Painted Cove, Baseboard, Door Casing and Window Trim
- ❖ White Composite Windowsills
- ❖ 2" Blinds at Windows
- ❖ Vinyl Floor Tile – Wet areas
- ❖ Carpet and Rebond Carpet Pad – Living Areas and Bedrooms
- ❖ Double By-Pass Wardrobe Doors (per floor plan)
- ❖ Craftsman Style Passage Doors with (3) Mortised Hinges
- ❖ 36" Passage Doors to Bedrooms (per floor plan)
- ❖ Lever Door Handles
- ❖ Ventilated Wire Shelving in Closets & Linen Closets

### WARRANTY

- ❖ Full One (1) Year and additional Six (6) Year Limited for Structural, Plumbing, Electrical, A/C, and Original Appliances

### ELECTRICAL

- ❖ 200 Amp Service
- ❖ Cabinet Door at Panel Box
- ❖ Recessed LED Lighting – throughout
- ❖ Ceiling Light in Secondary Bedrooms
- ❖ Smoke Alarms with Battery Backup
- ❖ Designer Light at all Exterior Doors
- ❖ Exterior GFI Receptacle
- ❖ Wire and Brace for Ceiling Fan at Living Room and Master Bedroom
- ❖ Vent fan – Hall Bath
- ❖ Lighted Vent Fan - Master Bath
- ❖ 220V Wire for Dryer
- ❖ Multi-port USB Charging Block

### KITCHEN

- ❖ Hardwood Cabinet Face Frames
- ❖ White Shaker Cabinet Doors
- ❖ 42" Lined Overhead Cabinets with Adjustable Shelves
- ❖ Light Rail at Overhead Cabinets
- ❖ Designer Cabinet Hardware
- ❖ Full Extension Soft Close Drawer Guides
- ❖ Soft Close Hidden Cabinet Door Hinges
- ❖ Drawer over Door Base Cabinet Construction with adjustable shelves and Bank of Drawers
- ❖ Cabinet Over Refrigerator
- ❖ Crescent Edge on Counter Tops at Kitchen and Baths
- ❖ Whirlpool Appliances:
- ❖ 18 Cu. Ft. Double Door Frost-Free Refrigerator
- ❖ 30" Free Standing Deluxe Electric Range
- ❖ Single Lever Kitchen Faucet with Sprayer
- ❖ 8" Deep Stainless-Steel Kitchen Sink
- ❖ 4" Mica Backsplash
- ❖ Range Hood with Light and Fan
- ❖ 4" LED Recessed Ceiling Lights in Kitchen and Hall

### BATHROOM

- ❖ 1-Piece Fiberglass Shower with Twin Seats, Master Bath
- ❖ 1-Piece Fiberglass Tub, Hall Bath
- ❖ Square China Sinks with Overflow Drain
- ❖ Shower Enclosure, Master Bath
- ❖ Elongated Commodes - All Baths
- ❖ 4" Mica Backsplash
- ❖ Raised Lav Cabinets
- ❖ Dual Handle Metal Lav Faucets with Push Down Drain
- ❖ Single Lever Temp-Stop Faucets at Tub and Shower
- ❖ Towel Bar and Tissue Holders
- ❖ Shower Rod with Liner at Hall Bathtub
- ❖ 2-Light Vanity Lights over Black Framed Mirrors
- ❖ Double sinks at MBATH lav area - per plan
- ❖ Bank of Drawers at MBATH Sink Base
- ❖ Light Over Shower at MBATH

**Note: All Specifications & Pricing Subject to Change Without Notice**

Skyline Homes 1230 SW 10<sup>th</sup> Street Ocala, FL 34471

Phone: (352) 629-7571

Revision: 05.24.24

